

SURFBOARDS®



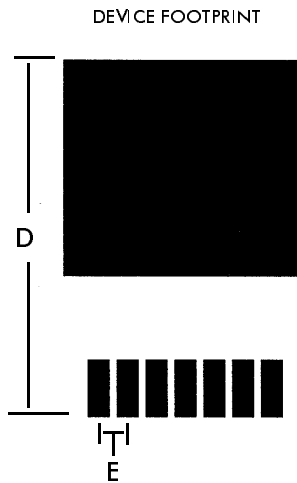
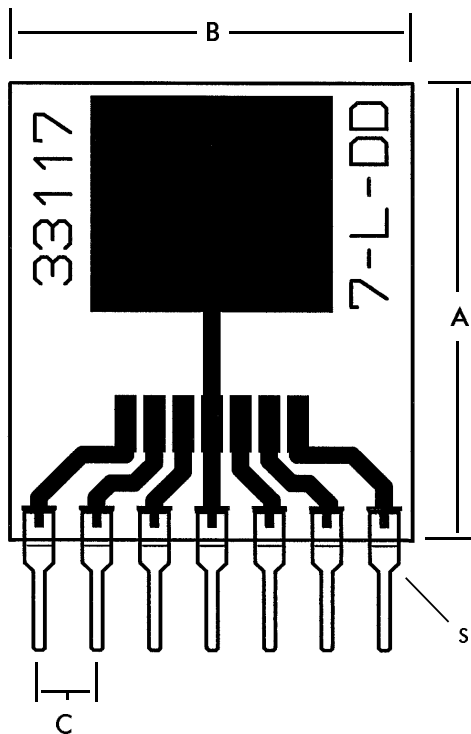
THE BREADBOARDING MEDIUM FOR SURFACE MOUNT™

APPLICATION SPECIFIC ADAPTERS

IDS33117 3-9-99

MODEL **33117**

FOR **7- LEAD DD** PACKAGE
SURFACE MOUNT DEVICE



PINS ON .1 in. CENTERS
PROVIDE COMPATIBILITY
WITH BREADBOARDS
AND SOCKETS.

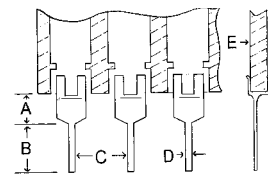
USE FOR PROTOTYPING,
DEVICE EVALUATION OR
TEST, SMD TO THROUGH
HOLE CONVERSION.

NOTE: CIRCUIT FOILS AND
OUTPUT PINS MAY NOT BE
SUITABLE FOR OPERATION
AT HIGHER RATED DEVICE
CURRENTS. EXTREME
TEMPERATURE RISE MAY
CAUSE FAILURE.

SINGLE-IN-LINE (SIP)
PINS ON .1 in
CENTERS. SEE PIN
SPECIFICATIONS

FIG.	INCHES	MM
A	.800	20.32
B	.700	17.78
C	.100	2.54
D	.625	15.87
E	.050	1.27

PIN SPECIFICATIONS / TOLERANCES



In Inches
 A = .062 ± .006
 B = .130 ± .010
 C = .100 ± .005
 D = .020 ± .004
 E = .031 ± .005

BOARD SPECIFICATIONS

BOARD MATERIAL: .031 ± .005 in. Thick G-10 FR-4
Glass Epoxy or equivalent.

CIRCUITS: 1oz Copper with solder coated pads.

TOLERANCES: Given in inches
 Board Size ± .020 / OAL ± .040
 Circuit pattern/position ± .005

Copyright 1997, 1999 by Capital Advanced Technologies, Inc. All rights reserved. Surfboards Are a registered trademark of Capital Advanced technologies, Inc. All other trademarks or registered trademarks are property of their respective owners. Availability, specifications, and prices are subject to change without notice. All information given is believed to be accurate but is not guaranteed. The user of information given or products represented by such information is responsible for determining the suitability of said information or products for a given purpose.

CAPITAL ADVANCED TECHNOLOGIES, INC.

CAROL STREAM, ILLINOIS. USA.

PHONE 630-690-1696 WWW.CapitalAdvanced.Com FAX-ON-DEMAND 630-690-2865